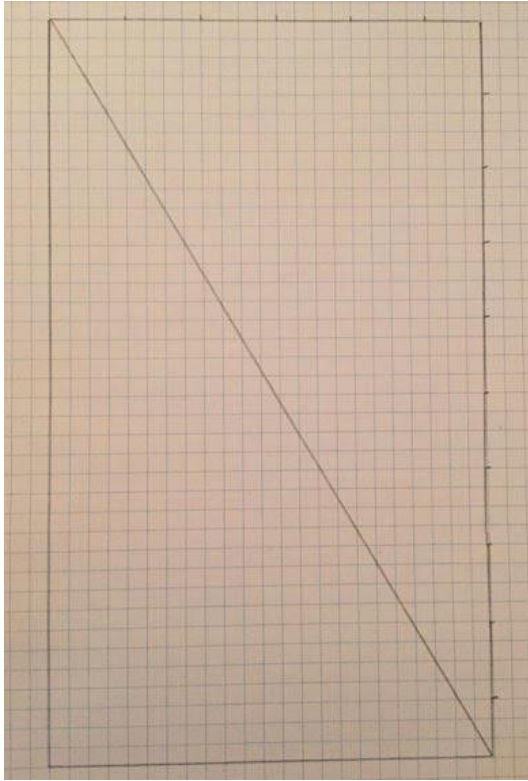


Instructions for Trimming Half-rectangle Triangle (HRT) Blocks

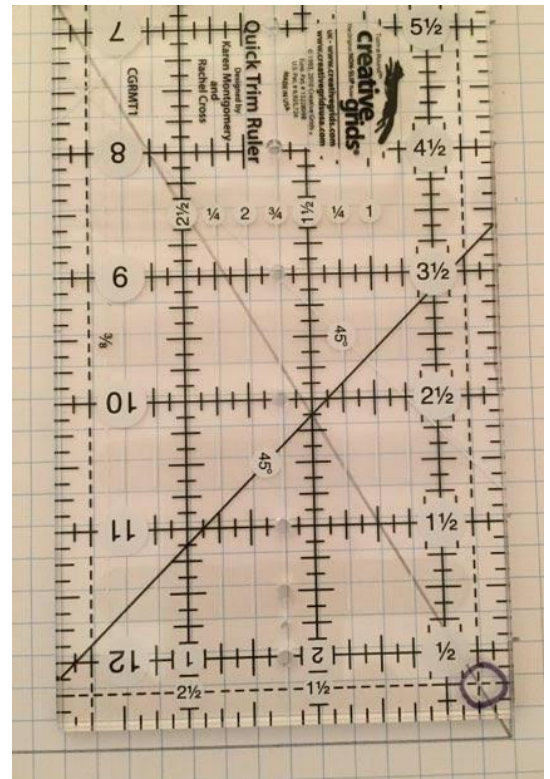
If you have sewn together two HRTs, your block will look like this:

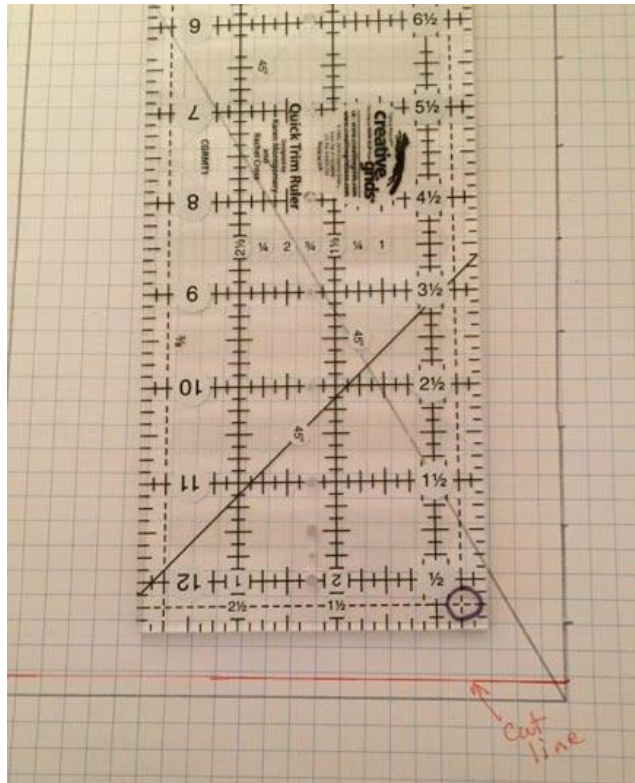


Position the ruler to determine bottom cut line by doing the following:

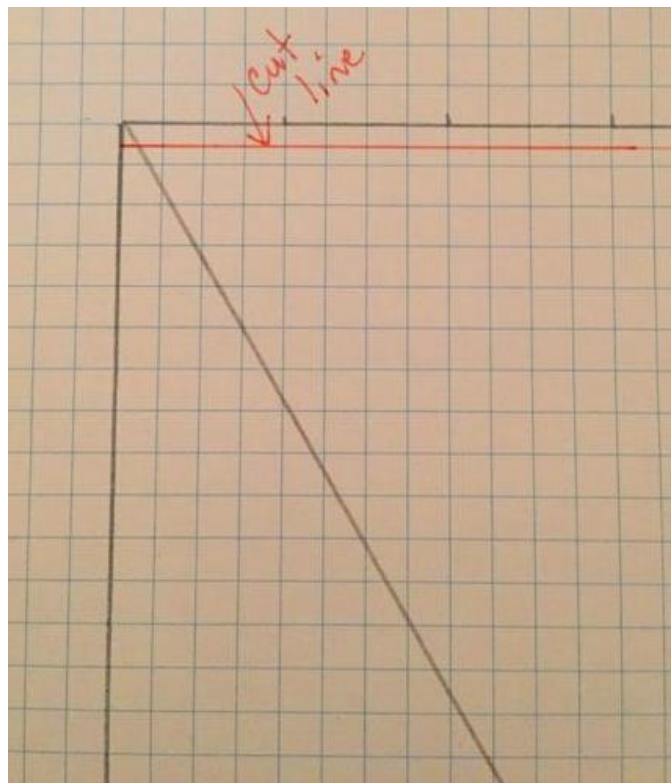
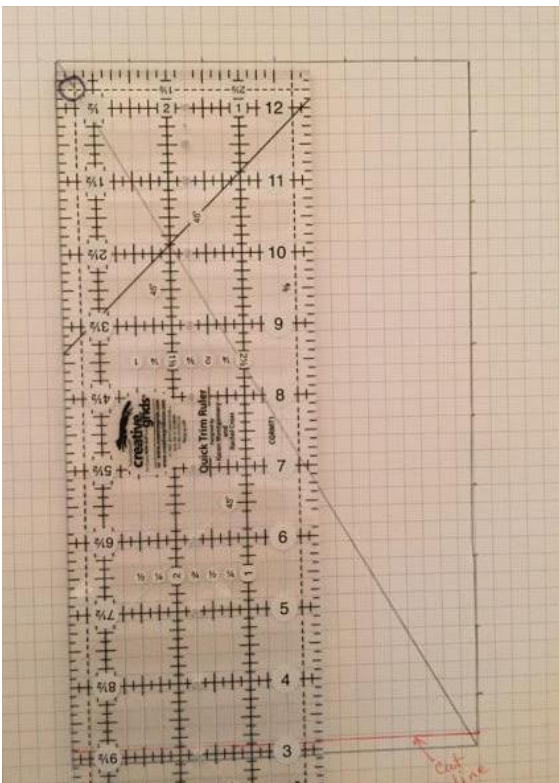
Note the circle drawn on ruler at the point that is $\frac{1}{4}$ " in from both the side and the bottom of the ruler. Align the ruler so that this point falls along the diagonal sewn line while the ruler is aligned along the right side of the block.

Draw the bottom cut line along the bottom of the ruler.

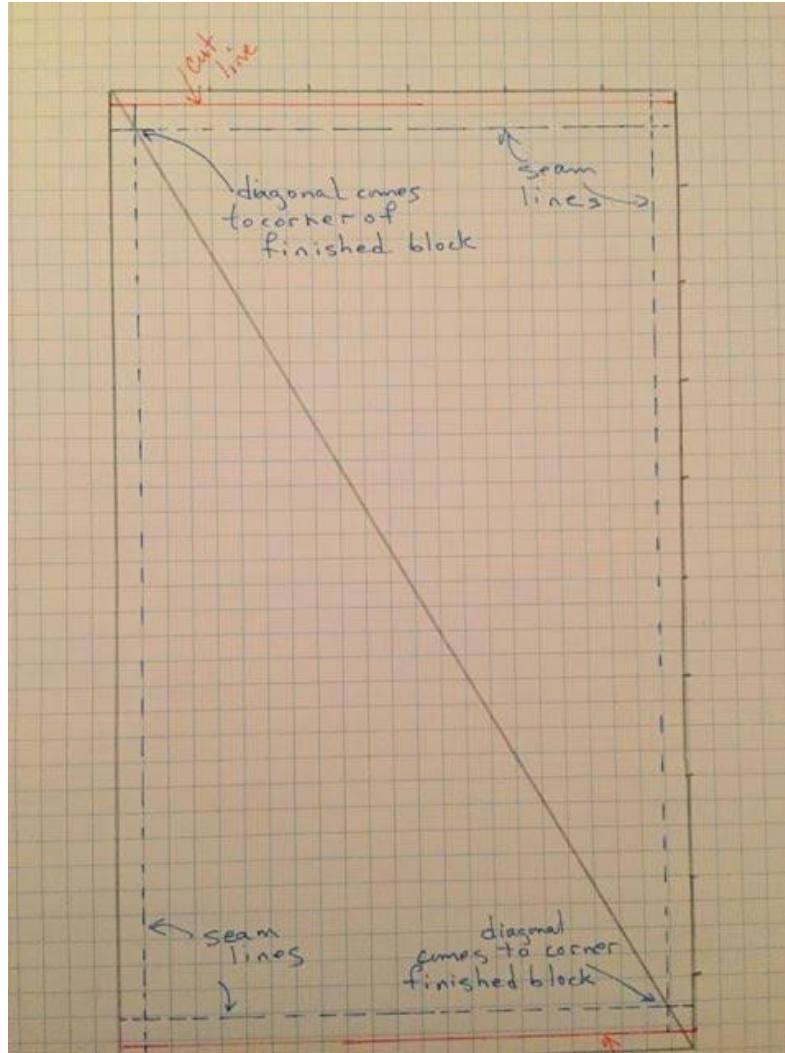




Now trim the left side so that it is parallel with the right side of the block... trim as little as possible. Then position the ruler so that sewn diagonal is 1/4" in from top left side and top. Draw the cut line for the top along the top of the ruler.



I've drawn the 1/4" seam lines inside the trimmed block so you can see the sewn diagonal comes to the corners of the finished block. Hence the diagonal seam lines between adjacent blocks will match.



I hope this is of some assistance in understanding how to cut your HRT blocks so that the angles connect in the finished quilt top.

Half fun!

Lorna